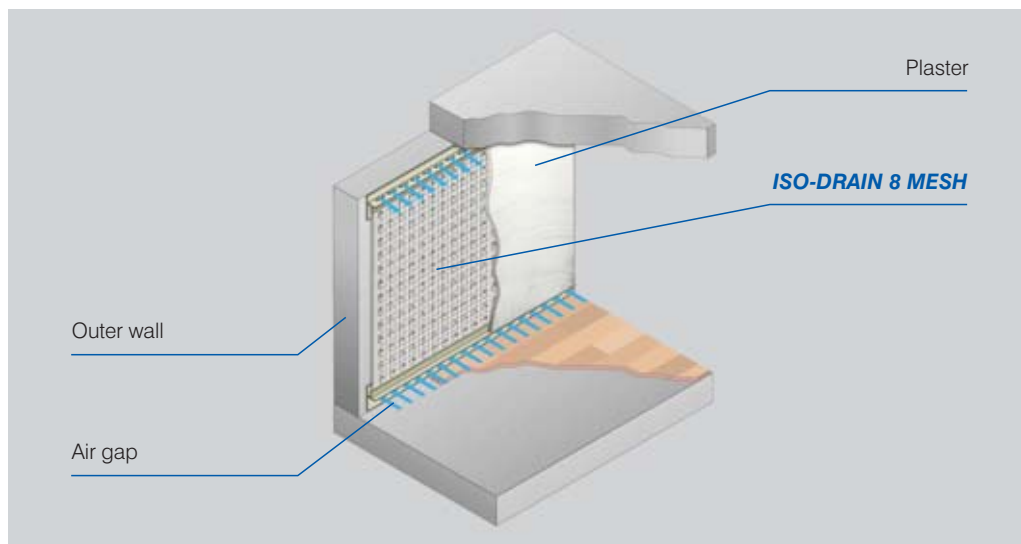


ISO-DRAIN® 8 MESH



Benefits:

ISO-DRAIN 8 MESH is a specialty dimpled sheet from INTERPLAST used for damp control in walls of basements and other below-ground structures.

Installed over the damp underlying wall surface, the dimpled sheet creates a continuous air gap for free air circulation behind the plaster or render finish. The integrated plastic mesh on the side facing

the plaster ensures efficient bonding. Here are the benefits of the system at a glance:

- Optimum insulation of damp rooms
- Ensures continuous air circulation and permanent damp control in wall
- Provides an excellent bonding surface for plasters, render coats, etc.
- Keeps plaster and/or wallpaper dry

INTERPLAST Special Installation Accessories:

INTERPLAST Anchor Heads

These anchor heads provide for close-fit, rapid installation over a wide variety of substrates.

Material: HDPE
Colour: white
Inner diameter: 3.5 mm
Package size: 250 pcs

INTERPLAST Finishing Strips

This special finishing strip with an integrated plastering guide edge provides a neat border over the installed dimpled sheet. It has perforations which promote air circulation between the sheet and the underlying wall.

Material: ABS
Colour: light beige
Section length: 2.0 m
Package size: 20 pcs



INTERPLAST® Kunststoffe GmbH

Bühlwiesenweg 1
72221 Haiterbach (Germany)

Telephone: +49 - (0) 74 56 - 9 30 08-0
Telefax: +49 - (0) 74 56 - 9 30 08-86

info@interplast.de
www.interplast.de



INTERPLAST®
Inline Process Technologies



ISO-DRAIN® 8 MESH



Properties	Values
Material	
• Dimpled sheet	HDPE for damp control
• Mesh layer	HDPE twist-woven in walls
Colour	
• Dimpled sheet	transparent
• Mesh layer	transparent
Thickness	
• Dimpled sheet (apprx.)	0.7 mm
• Mesh layer (apprx.)	warp fibre diameter: 500 dtex weft fibre diameter: 770 dtex
Sheet width	2.0 m
Grid size (apprx.) of mesh	5 mm
Area weight (apprx.)	700 g/m ²
Dimple height	8 mm
Dimple spacing (apprx.)	1150 per m ²
Air gap (apprx.) between dimples	5.5 l/m²
Compressive strength (apprx.)	150 kN/m ² (15 t/m ²)
Service temperature range	-40 °C to +80 °C
Physiological properties	non-polluting for drinking water

**For insulation
and ventilation
of damp walls**

INTERPLAST dimpled sheet products are resistant to a wide range of chemicals, impervious to root penetration, rot-proof and unaffected by soil bacteria and fungi.

INTERPLAST dimpled sheet products conform to applicable DIN standards. Installation should be done using only original accessories (see brochure "ISO-DRAIN 8 MESH").

INTERPLAST®
Inline Process Technologies

INTERPLAST® Kunststoffe GmbH



Bühlwiesenweg 1
72221 Haiterbach (Germany)

Telephone: +49 - (0) 74 56 - 9 30 08-0
Telefax: +49 - (0) 74 56 - 9 30 08-86

info@interplast.de
www.interplast.de



INTERPLAST® – Dimpled Sheet From the Specialists in Inline Processes