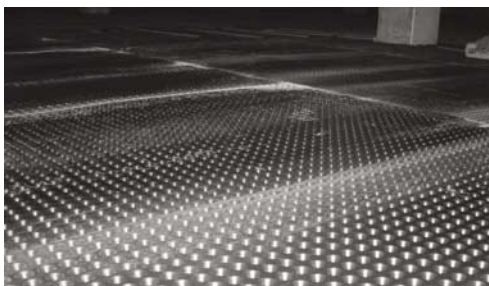


ISO-DRAIN® 8 DIAGONAL



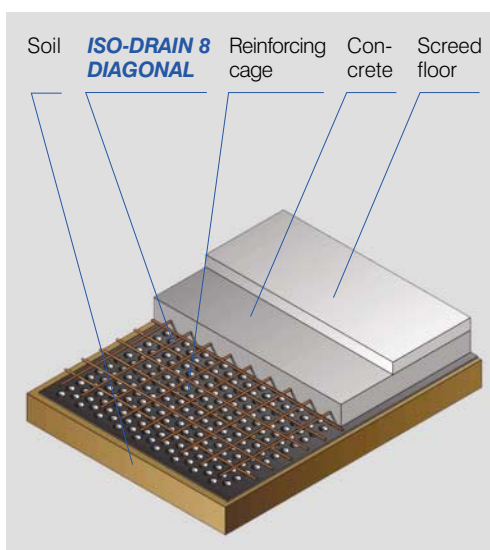
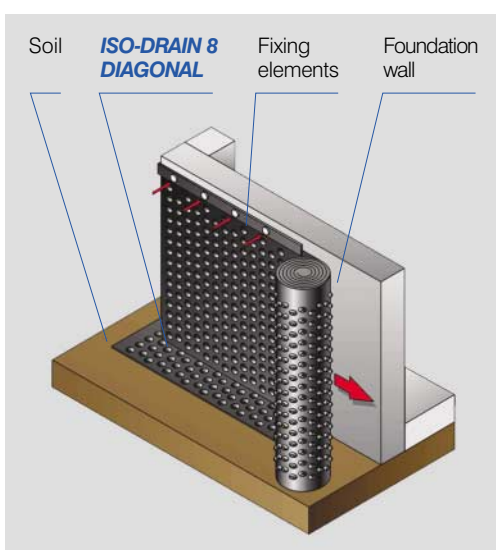
Benefits:

ISO-DRAIN 8 DIAGONAL is an INTERPLAST dimpled sheet product developed specifically for foundation wall protection and blinding beds.

It provides the following benefits in these application fields:

- Keeps water from reaching the wall surface
- Close dimple spacing provides high compressive strength and stability
- Provides ventilation over the wall surfaces covered
- Provides additional thermal insulation over the walls
- Is extremely durable, rot-proof and impervious to root penetration
- In blinding beds it eliminates the need for a lean concrete bed including its excavation
- Is fast and easy to install
- Causes minimum delay in subsequent building work

ISO-DRAIN 8 DIAGONAL is available in widths up to 4 m which facilitate ease and speed of installation. Use of large widths can save up to half of the installation accessories and up to 25 % of the required material due to reduced overlap area.



INTERPLAST® Kunststoffe GmbH

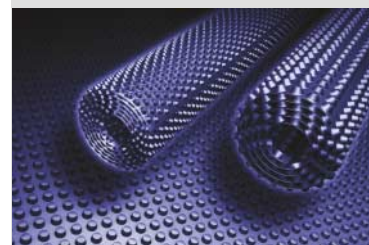
Bühlwiesenweg 1
72221 Haiterbach · Germany

Telephone: +49 (0) 74 56 - 9 30 08-0
Fax: +49 (0) 74 56 - 9 30 08-86

E-Mail: info@interplast.de
<http://www.interplast.de>



INTERPLAST®
Inline Process Technologies



ISO-DRAIN® 8 DIAGONAL

Properties	Values
Material	HDPE
Colour	black or brown
Sheet thickness (apprx.)	0.6 mm
Maximum width	4.0 m
Area weight (apprx.)	600 g/m ²
Dimple height	8 mm
Dimple spacing (apprx.)	1860 per m²
Air gap (apprx.) between dimples	5.3 l/m²
Drainage capacity (apprx.)	4.6 l/s/m 276 l/min/m 16,600 l/h/m
Compressive strength (apprx.)	250 kN/m² (25 t/m²)
Service temperature range	-40 °C to +80 °C
Physiological properties	non-polluting for drinking water
Fire resistance rating	B2 (DIN 4102)

**For foundation
wall protection and
blinding beds**

INTERPLAST dimpled sheet products are resistant to a wide range of chemicals, impervious to root penetration, rot-proof and unaffected by soil bacteria and fungi.

INTERPLAST dimpled sheet products conform to applicable DIN standards. Installation should be done using only original accessories (see brochure "Installation Accessories").

INTERPLAST® Kunststoffe GmbH

Bühlwiesenweg 1
72221 Haiterbach · Germany

Telephone: +49 (0) 74 56 - 9 30 08-0
Fax: +49 (0) 74 56 - 9 30 08-86

E-Mail: info@interplast.de
<http://www.interplast.de>



INTERPLAST®
Inline Process Technologies

